



FLYING SITE LAYOUT

GEOLOCATION AND AIRSPACE

Ottawa Remote Control Club - ORCC's ORCC outdoor flying site is located at [1600 Bankfield Road, Kars, ON, K0A 2E0](#)

The centre of the pilot stations is located at 45.208707, -75.725191 at ~300 feet above sea level.

The airspace is class G, uncontrolled up to ~2500 feet above sea level according to [National Research Council's Drone site selection tool](#) and Nav Canada's [Designated Airspace Handbook](#).

The *Flying Area* (below) corresponds to the recommendation for Large / Turbine / High performance aircraft in *Chart 1: Flying Distance* in [MAAC MAPT01-T-1 - Flying Field Requirements](#). Nominal flying space is ~3000 ft x ~1500 ft up to ~1000 ft above ground level.



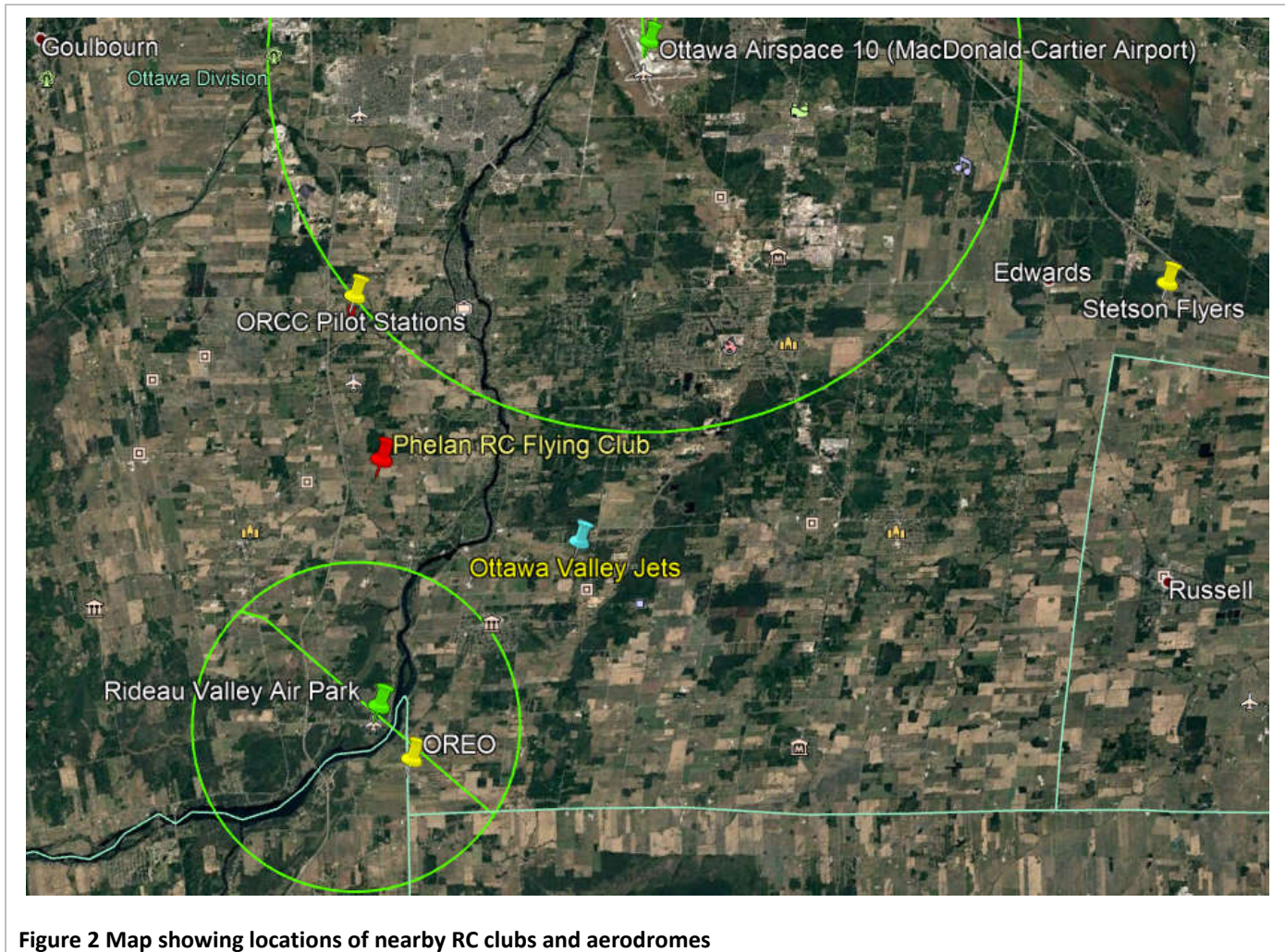
Figure 1 Flying Area

NEARBY FLYING SITES

The nearest full-scale aerodrome is the [Rideau Valley Air Park](#) located ~7.5 nautical miles south of the ORCC pilot stations.

The nearest RC club site is the [Phelan Airfield](#), roughly 3.045 nautical miles south of the ORCC pilot stations.

See **Figure 2 Map showing locations of nearby RC clubs and aerodromes** on page 2.



SITE LAYOUT

The distance from the flight line to the pilot stations is ~10 metres and the +1 metre high safety barrier is located ~9 metres south of the flight line. ([MPPD 06 - Outdoor Model Aircraft Flying Field Sanctioning and Specifications](#) requires a minimum distance from flight line to pilot station of 7 metres)

The distance from the flight line to the parking and non-flying activities area is ~30 metres south of the flight line.

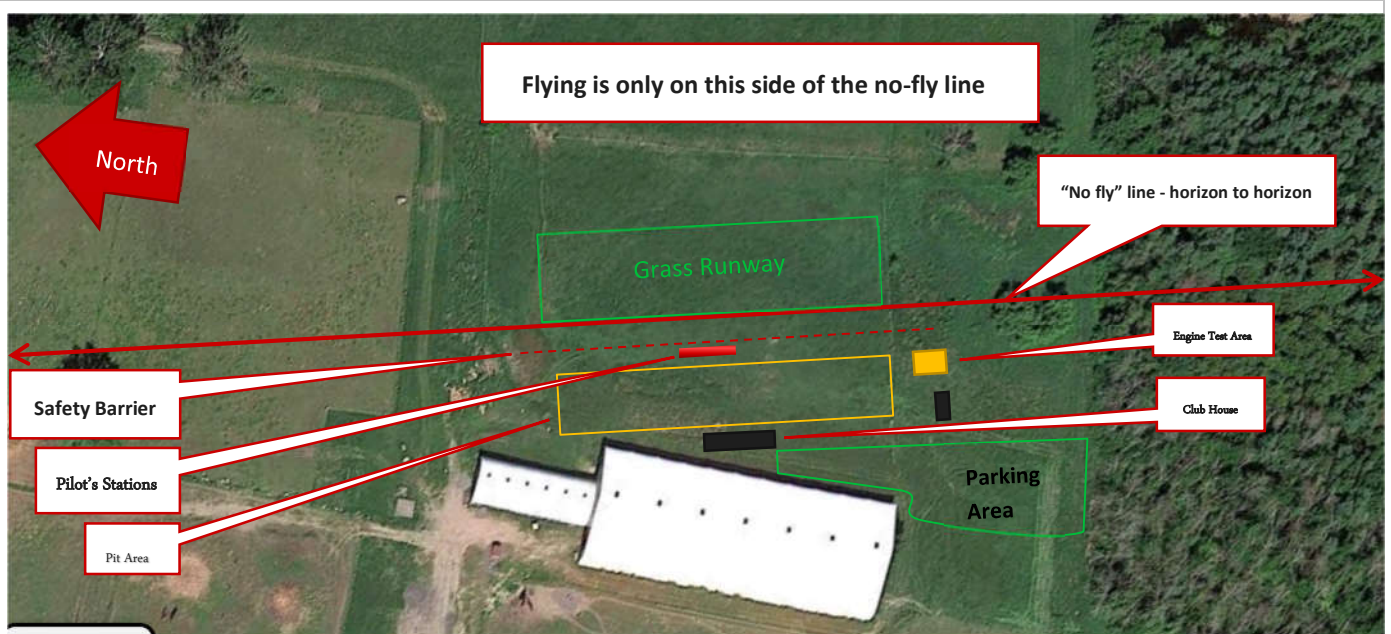
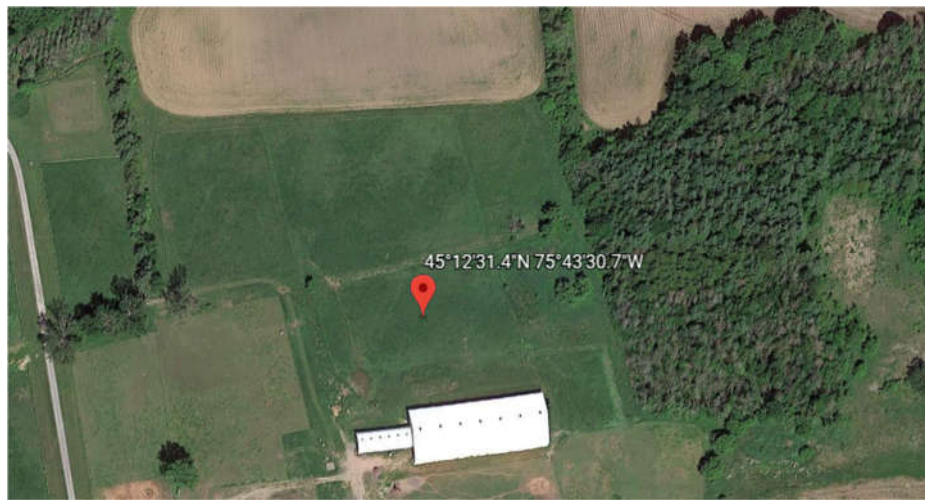


Figure 3 Designated areas





DOCUMENT HISTORY

Rev	Description	Date
-	ORCC Airfield Layout submission by Jeffrey Nidd – 1600 Bankfield Road, Kars, ON, KOA 2E0	Feb. 04, 2021
A		
B		